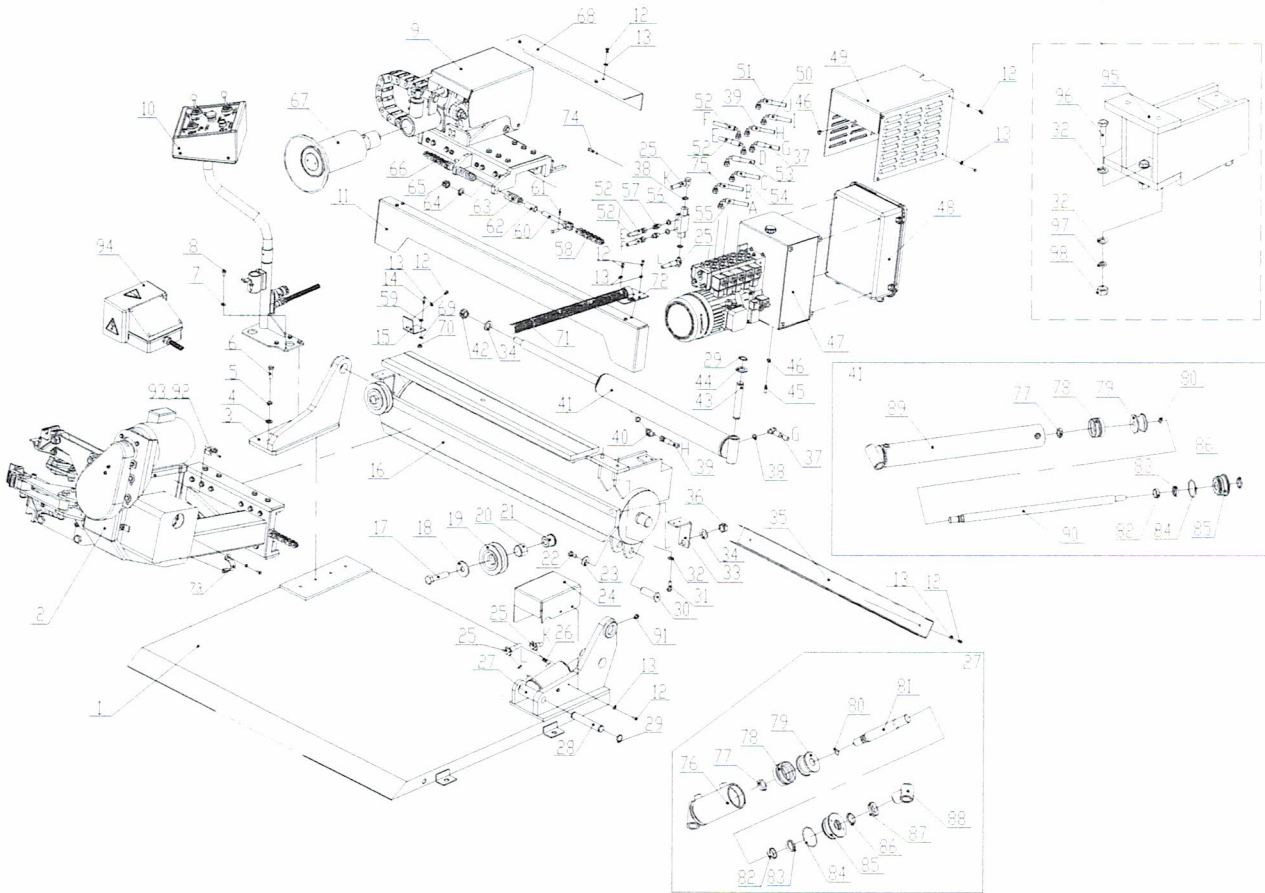


# ATTC305

## PARTS LIST

### GENERAL BREAKDOWN



### GENERAL BREAKDOWN

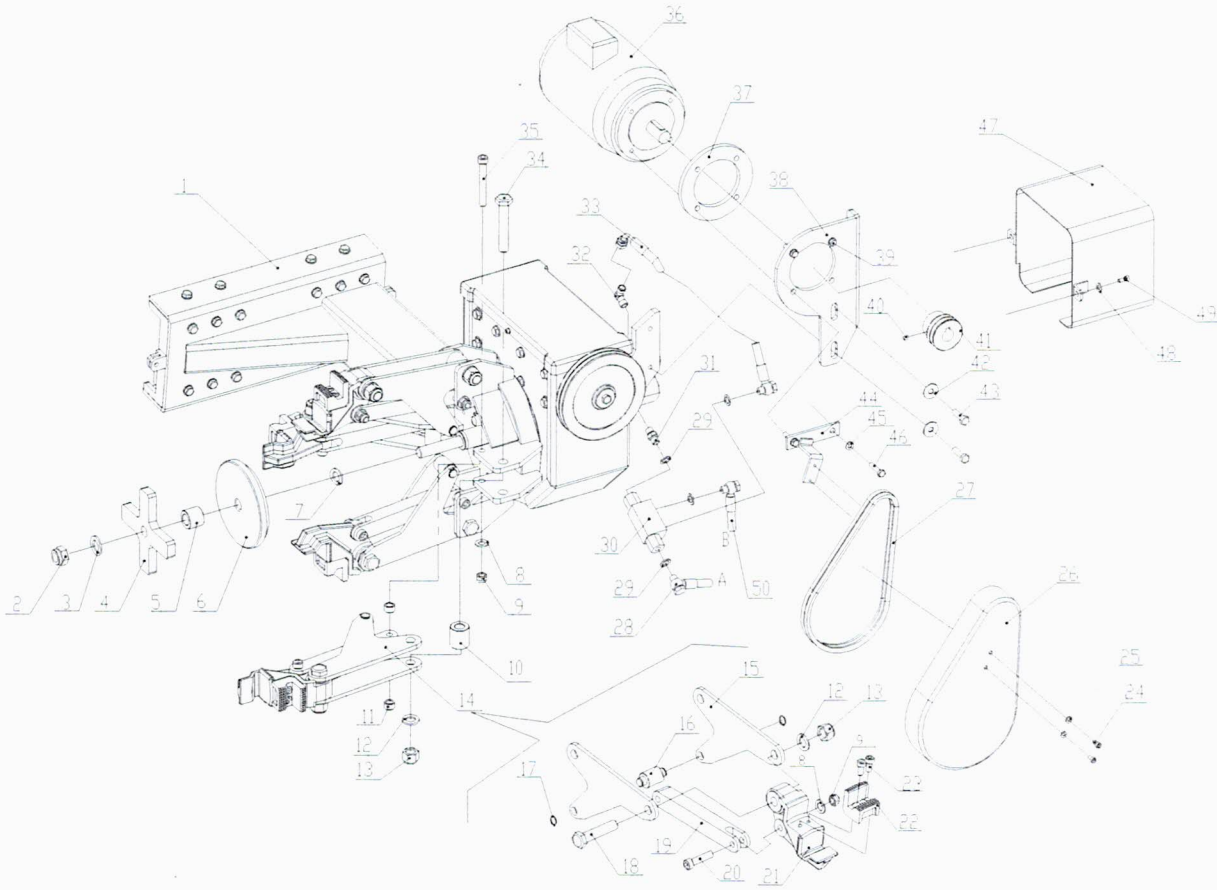
ITEM	PART NO.	DESCRIPTION	QTY
1	C51B110000	Frame	1
2	C51B300000B	Self-centering chuck unit	1
3	C51B010000	Guide support	1
4	0205013	Washer D.12 - GB/T97.1	4
5	0208009	Locking washer D.12 - GB/T93/	4
6	0201148	Screw M12X40 - GB/T5783	4
7	0205008	Washer D.8 - GB/T97.1	4
8	0201026	Screw M8X16 - GB/T5783	4

ITEM	PART NO.	DESCRIPTION	QTY
9	C51B400000	Carriage unit	1
10	C51BD12000	Control unit	1
11	C51B000018	Chain protection	1
12	0201011	Screw M6X12 - GB/T5783	18
13	0205006	Washer D.6 - GB/T97.1	23
14	0202021	Screw M5X20 - GB/T70.1	2
15	C51B000016	Support	1
16	C51B200000	Guide	1
17	0201185	Screw M20X90 - GB/T5783	2
18	C51B000005	Pulley spacer	2
19	C51B000003	Chain pulley	2
20	0210054	Bush SF-1/4028	2
21	C51B000004	Pulley pin	2
22	0201078	Screw M12X25 - GB/T5783	1
23	0205014	Washer D.12 - GB/T96/12	1
24	C51B000013	Chuck arm cylinder cover	1
25	304-JJ1300	Hydraulic hose L=1300	2
26	BZ-GZ-003	Flow restrictor	1
27	C51BY30000	Chuck arm cylinder	1
28	C51B000007	Cylinder lower pin	1
29	0212004	Seeger D.25 - GB/T894.1	4
30	C51B000006	Cylinder upper pin	1
31	0201049	Screw M10X30 - GB/T5783	2
32	0205011	Washer D.10 - GB/T97.1	8
33	C51B000017	Chain protection support	2
34	0205022	Washer D.20 - GB/T97.1	3
35	C51B000010	Hose cover	1
36	0203020	Nut M20 - GB/T6170	2
37	304-WJ950	Hydraulic hose L=950	1
38	0313001	Washer 1/4	8
39	304-ZW1600	Hydraulic hose L=1600	1
40	0303030	Banjo union 1/4	1
41	C51BY40000	Carriage cylinder	1
42	0204027	Self-locking nut M20 - GB/T889.1	1
43	C51B000008	Carriage cylinder pin	1
44	YC8-4399289	Washer	2
45	0209048	Screw M8X30 - GB/T77	1

ITEM	PART NO.	DESCRIPTION	QTY
46	0203008	Nut M8 - GB/T6170	2
47	C51BY10000	Hydraulic power unit	1
48	C51BD11000	Electric unit	1
49	C51B000019	Power unit cover	1
50	304-ZW3070	Hydraulic hose L=3070	1
51	304-ZW3170	Hydraulic hose L=3170	1
52	304-ZW250	Hydraulic hose L=250	2
53	304-ZW3000	Hydraulic hose L=3000	1
54	304-WJ3200	Hydraulic hose L=3200	1
55	304-WJ1800	Hydraulic hose L=1800	1
56	0307042	Stop valve BP25000000	1
57	0303065	Union 1/4	2
58	0215094	Chain BL644X58	1
59	0205005	Washer D.5 - GB/T96	2
60	C51B000001	Chain tensioner	2
61	0213038	Split pin 2.5X25 - GB/T91	4
62	C51B000002	Spring guiding pin	2
63	C51B000023	Spring	2
64	0205020	Washer D.16 - GB/T97.1	2
65	0204008	Self-locking nut M16 - GB/T889.1	2
66	0215093	Chain BL644X46	1
67	C51B500000	Press roller unit	1
68	C51B000009	Cylinder protection	1
69	0205004	Washer D.5 - GB/T97.1	2
70	0204002	Self-locking nut M5 - GB/T889.1	2
71	C51B000022	Pipe conduit	1
72	C51B000020	Support	1
73	C51B000021	Pipe U bolt	2
74	0202035	Screw M6X40 - GB/T70.1	1
75	304-WJ1850	Hydraulic hose L=1850	1
76	C51BY32000	Chuck arm cylinder liner	1
77	0204048	Nut M22X1.5 - GB/T6173	2
78	0312014	Gasket 70X50X22.4	2
79	YA-70-3	Piston	2
80	0309022	O-ring 24X2.4	2
81	C51BY38004	Cylinder shaft	1
82	0305007	Guiding ring 30X10X2.5	2

ITEM	PART NO.	DESCRIPTION	QTY
83	0310009	Seal 30X38X7	2
84	0309050	O-ring 70X3.1	2
85	C51AY38005	Cylinder guiding cover	2
86	0311005	Scraper 30X38X5/6.5	2
87	0204072	Nut M27X1.5 - GB/T812	1
88	C51B000014	Cylinder upper pin support	1
89	C51AY42000	Carriage cylinder liner	1
90	C51BY48001	Cylinder shaft	1
91	0215020	Greaser M10X1	2
92	0206041	Screw M5X12 - GB/T818	2
93	0508304	Pipe clamp M18	2
94	0505033	Pedal control unit	1
95	C51B220100	Motor support extension	1
96	0201051	Screw M10X45 - GB/T5782	3
97	0208007	Locking washer D.10 - GB/T93	3
98	0203032	Nut M10 - GB/T6170	3

## SELF-CENTERING CHUCK UNIT

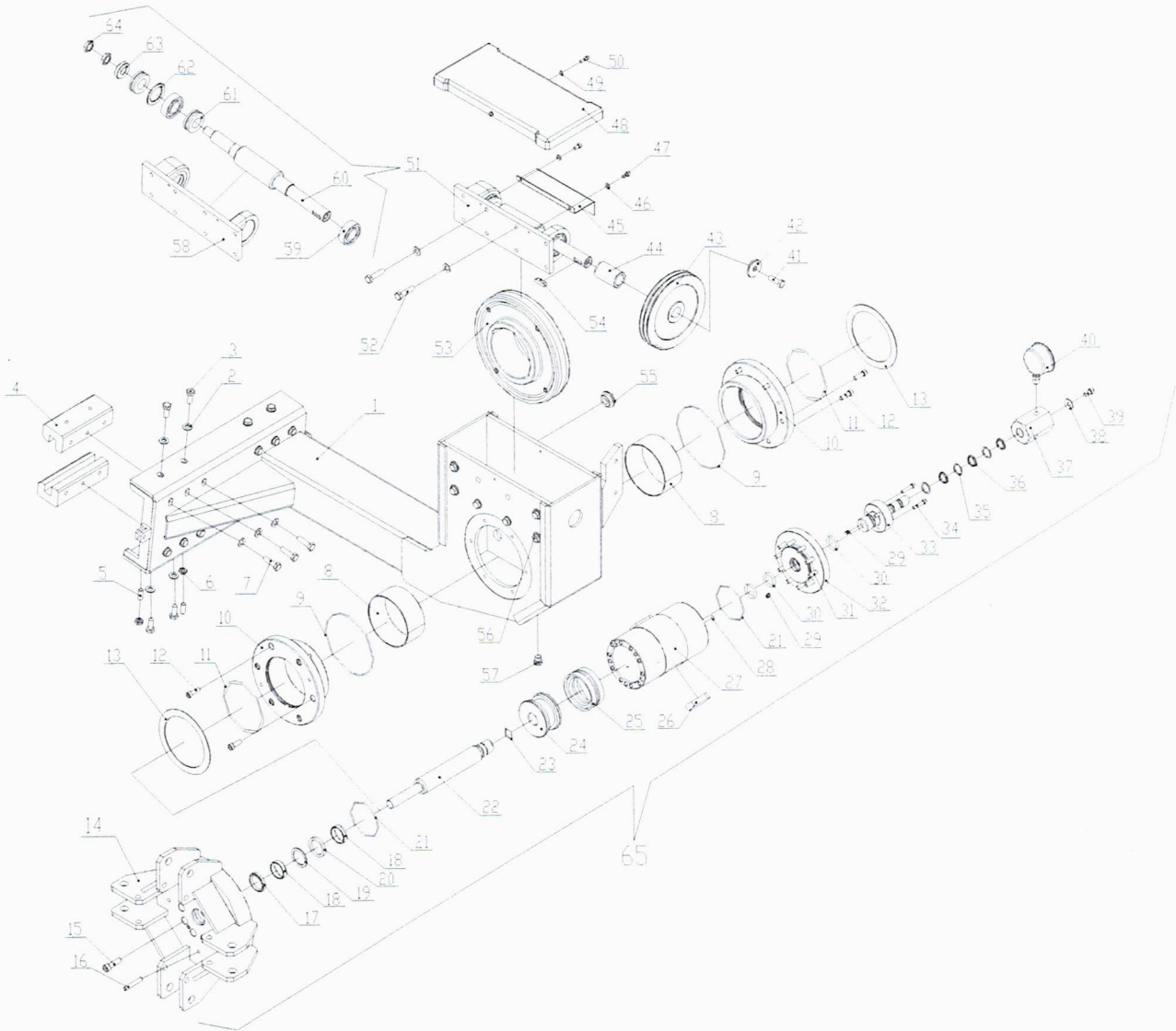


## SELF-CENTERING CHUCK UNIT

ITEM	PART NO.	DESCRIPTION	QTY
1	C51B300000A	Chuck arm unit	1
2	0204029	Self-locking nut M20X1.5 - GB/T889.2	1
3	0205022	Washer D.20 - GB/T97.1	1
4	CC-580102	Cross piece	1
5	CC-580103	Spacer	1
6	CC-580101	Chuck opening control plate	1
7	CC-580104	Spacer A	1
8	0205013	Washer D.12 - GB/T97.1	8
9	0204007	Self-locking nut M12 - GB/T889.1	8
10	CC-510204	Spacer	4
11	CC-510205	Spacer	8
12	0205021	Washer D.18 - GB/T97.1	8
13	0204010	Self-locking nut M18X1.5 - GB/T889.2	8

ITEM	PART NO.	DESCRIPTION	QTY
14	C51B340000	Self-centering clamp unit	4
15	C51B340001	Clamp arm	8
16	CC-510203	Pin	4
17	0212002	Seeger D.16	8
18	0201118	Screw M18X1.5X80 - GB/T5785	4
19	C51B340002	Clamp lever	4
20	0202072	Screw M12X50 - GB/T70.1/12.9	4
21	CC-510102	Clamp support	4
22	CC-510101	Clamp	4
23	0202060	Screw M10X20 - GB/T70.1	8
24	0202024	Screw M6X12 - GB/T70.1	2
25	0205006	Washer D.6 - GB/T97.1	2
26	CC-840100A	Belt casing	1
27	0511077	Driven belt V800	2
28	304-WJ1800	Hydraulic hose L=1800	1
29	0313001	Washer 1/4	4
30	0307020	Stop valve BP17000000	1
31	0303065	Union 1/4	1
32	0303010	90° union 1/4	1
33	302-WJ310	Hydraulic hose L=310	1
34	0201105	Screw M18X1.5X100 - GB/T5785	4
35	0202095	Screw M12X90 - GB/T70.1	4
36	0509026	220/380V/50/60HZ/1.5KW 4P	1
37	CC-830102V	Spacer	1
38	C51B331000	Motor support	1
39	0201031	Screw GB/T5783/M8X30	2
40	0209046	Screw M8X10 - GB/T80	1
41	YC8-3000975	Belt pulley	1
42	0205010	Washer D.10 - GB/T96	2
43	0201117	Screw M8X35 - GB/T5783	2
44	C51B330001	Support	1
45	0205008	Washer D.8 - GB/T97.1	4
46	0201050	Screw M10X35 - GB/T5783	2
47	C51B350000	Pivot union cover	1
48	0205008	Washer D.8 - GB/T97.1	2
49	0202040	Screw M8X16 - GB/T70.1	2
50	304-WJ1850	Hydraulic hose L=1850	1

# CHUCK ARM UNIT



# CHUCK ARM UNIT

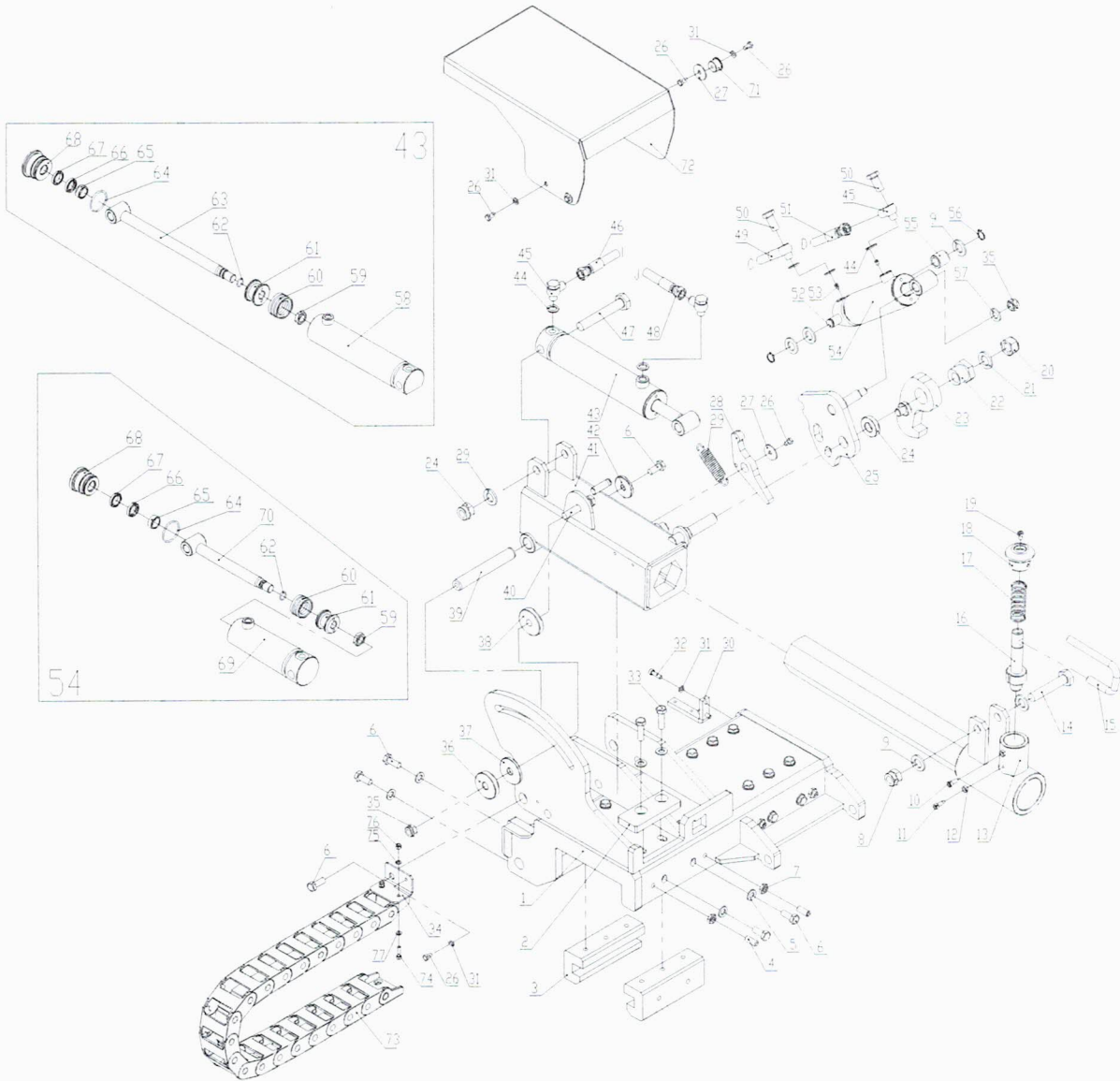
ITEM	PART NO.	DESCRIPTION	QTY
1	C51B310000	Chuck arm	1
2	0205011	Washer D.10 - GB/T97.1	28
3	0201064	Screw M10X25 - GB/T5783	8
4	CC-201010	Carriage slider	4
5	0209024	Screw M10X25 - GB/T77	4
6	0204012	Nut M10 - GB/T6172.1	4
7	0201050	Screw M10X35 - GB/T5781	12

ITEM	PART NO.	DESCRIPTION	QTY
8	0210037	Bush SF-1/11550	2
9	0309047	O-ring 145X3.1	2
10	CC-810101	Flange	2
11	0309012	O-ring 120X3.1	2
12	0202047	Screw M8X25 - GB/T70.1	12
13	CC-810104	End bearing	2
14	CC-520100	Chuck turntable	1
15	0202079	Screw M10X35 - GB/T70.1	10
16	0213067	Pin 8X50 - GB/T120.2/	5
17	0311006	Scraper 35X43	1
18	0305007	Guiding ring 35X10X2.5	2
19	C-2C120-85-9	Seal ring 35X45X2	1
20	0310010	Seal 35X45X6	1
21	0309076	O-ring 85X3.1	2
22	C-2C120-85-2	Chuck cylinder shaft	1
23	0309023	O-ring 28X3.1	1
24	C-2C120-85-3	Piston	1
25	0312017	Gasket 85X65	1
26	0213029	Tab 20X60 - GB/T1096	2
27	C-2C120-85-1	Chuck cylinder liner	1
28	0309007	O-ring 11X1.9	1
29	0305001	Plug QD07	2
30	0309026	O-ring 36X3.5	3
31	0202042	Screw M8X40 - GB/T70.1	10
32	C-2C120-85-4	Cylinder back cover	1
33	C-2C120-85-5	Pivot union pin	1
34	0202026	Screw M6X30 - GB/T70.1	3
35	C-2C120-85-7	Seal ring 20X26X1.5	3
36	0313014	Seal 20X3.55	3
37	C-2C120-85-6	Pivot union body	1
38	0205009	Washer D.8 - GB/T96	1
39	0202040	Screw M8X16 - GB/T70.1	1
40	0305056	Pressure gauge 60X250	1
41	0201062	Screw M10X20 - GB/T5783	1
42	YC8-3001068	Washer	1
43	YC8-3001052b	Driven pulley	1
44	CC-410103	Bush	1



ITEM	PART NO.	DESCRIPTION	QTY
45	YC8-3001010	Oil screen	1
46	0205006	Washer D.6 - GB/T97.1	2
47	0202024	Screw M6X12 - GB/T70.1	2
48	C51B300001	Cover	1
49	0205004	Washer D.5 - GB/T97.1	2
50	0202021	Screw M5X20 - GB/T70.1	2
51	C51B320000	Worm unit	1
52	0201068	Screw M10X40 - GB/T5781	2
53	CC-410101A	Helical gear	1
54	0213025	Tab 8X30 - GB/T1096	1
55	0215024	Oil indicator M27X1.5	1
56	0201051	Screw M10X45 - GB/T5781	6
57	0305016	Oil plug 1/4	1
58	C51B320001	Worm support	1
59	0214019	Bearing 6205	2
60	CC-410102	Worm	1
61	0214009	Thrust bearing 51205	2
62	CC-410104	Washer	1
63	YC8-3001114	Spacer	1
64	0204014	Nut M16X1.5	2
65	C-2C120-85-0	Chuck cylinder unit	1

# CARRIAGE UNIT



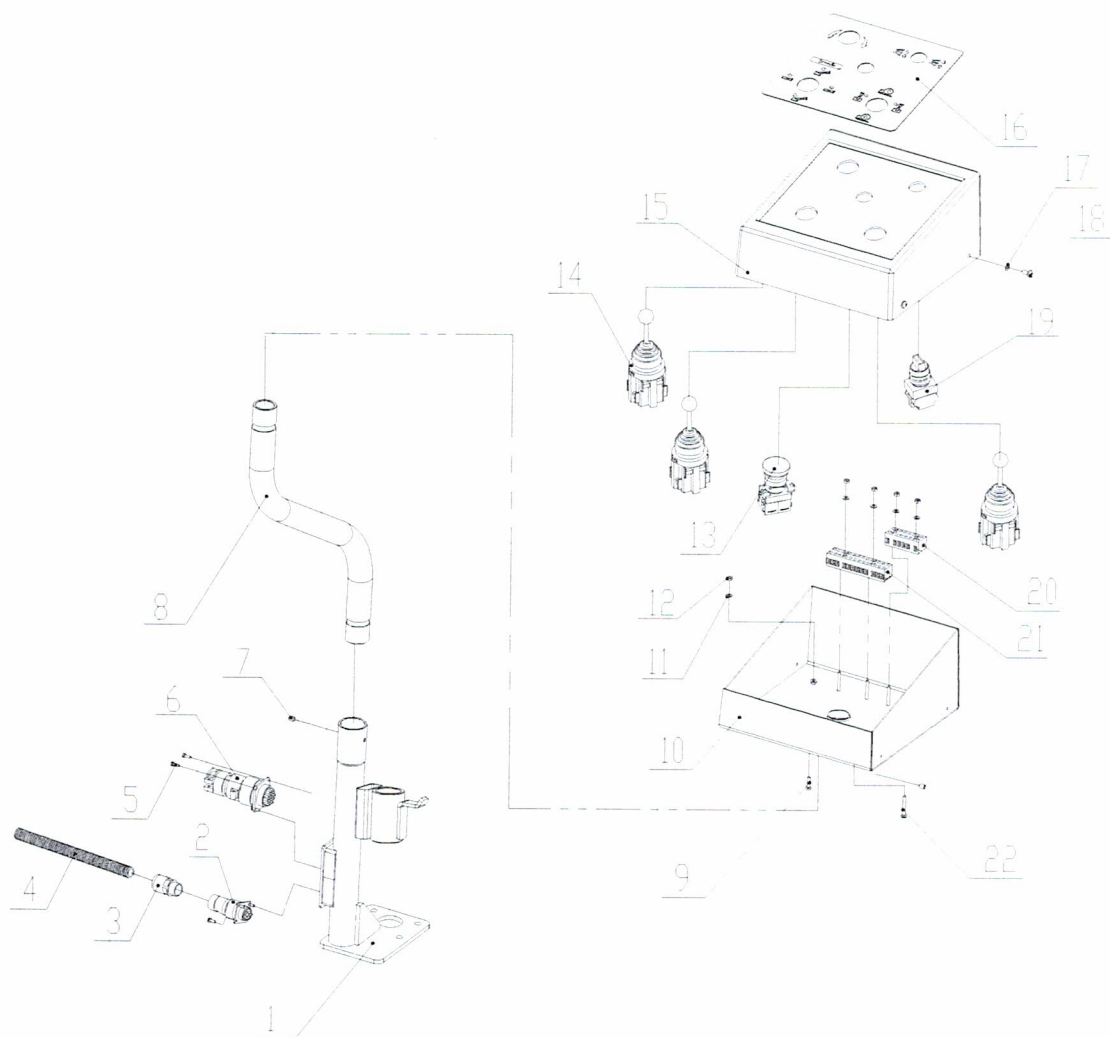
# CARRIAGE UNIT

ITEM	PART NO.	DESCRIPTION	QTY
1	C51B410000	Carriage	1
2	C51B400010	Rubber pad	1
3	CC-201010	Slider	4
4	0209024	Screw M10X25 - GB/T77	4
5	0205011	Washer D.10 - GB/T97.1	20
6	0201064	Screw GB/T5783/M10X25	10
7	0204012	Nut M10 - GB/T6172.1	4

ITEM	PART NO.	DESCRIPTION	QTY
8	0204008	Self-locking nut M16 - GB/T889.1	2
9	0205020	Washer D.16 - GB/T97.1	6
10	0202025	Screw M6X14 - GB/T70.1	1
11	C56B410005	Guide screw	1
12	0203004	Nut M6 - GB52	2
13	C51B430000	Hexagonal arm	1
14	0201200	Screw M16X80 - GB/T5782	1
15	C51B400008	Handle	1
16	C51B400007	Positioning pin	1
17	C56B412003	Spring	1
18	C56B412002	Spring cap	1
19	0202037	Screw M6X8 - GB/T70.1	1
20	0204009	Self-locking nut M18 - GB/T889.1	1
21	0205021	Washer D.18 - GB/T97.1	1
22	CC-610001	Off-center bush	1
23	C51B450000	Hook	1
24	C51B400003	Spacer	1
25	C51B440000	Cam	1
26	0201011	Screw M6X12 - GB/T5781	6
27	C51B400004	Washer	2
28	C51B400002	Cam limiter	1
29	C51B400011	Spring	1
30	C51B400009	Cylinder protection support	1
31	0205006	Washer D.6 - GB/T97.1	6
32	0202033	Screw M6X20 - GB/T70.1	2
33	0201050	Screw M10X35 - GB/T5783	12
34	C51B000015	Chain holding plate	1
35	0204007	Self-locking nut M12 - GB/T889.1	2
36	C56B320005	Spacer	1
37	C56B320006	Nylon washer	1
38	C56B320007	Nylon washer	1
39	C51B400001	Pin	1
40	0201081	Screw M12X60 - GB/T5782	1
41	C51B420000	Post	1
42	YC8-3001068	Washer	1
43	C51BY20000	Tool moving cylinder unit	1
44	0313001	Washer 1/4	5

ITEM	PART NO.	DESCRIPTION	QTY
45	0303030	Banjo union 1/4	3
46	304-ZW3070	Hydraulic hose L=3070	1
47	0201101	Screw M16X100 - GB/T5782	1
48	304-ZW3170	Hydraulic hose L=3170	1
49	304-WJ3200	Hydraulic hose L=3200	1
50	BZ-720B-0401	Banjo bolt	2
51	304-ZW3000	Hydraulic hose L=3000	1
52	C51B400005	Cylinder lower pin	1
53	BZ-GZ-003	Flow restrictor	2
54	C51BY60000	Tool tilting cylinder unit	1
55	C51B400006	Spacer B	1
56	0212002	Seeger D.16 - GB/T894.1	2
57	0205013	Washer D.12 - GB/T97.1	2
58	C51BY21000	Moving cylinder liner	1
59	0204014	Nut M16X1.5 - GB/T6173	2
60	0312004	Gasket 45X31X15.5	2
61	C51BY28002	Piston	2
62	0309019	O-ring 18X2.4	2
63	C51AY22000	Cylinder shaft	1
64	0309060	O-ring 45X3.1	2
65	0305007	Guiding ring 20X10X2.5	2
66	0310006	Seal 20X28X5.7	2
67	0311022	Scraper 20X28X4.5/6	2
68	C51BY28001	Cylinder guiding cover	2
69	C51BY61000	Tilting cylinder liner	1
70	C51BY62000	Cylinder shaft	1
71	C51B000012	Cover pin	1
72	C51B000011	Top cover	1
73	0511187	Plastic chain	1
74	0202021	Screw M5X20 - GB/T70.1	2
75	0205004	Washer D.5 - GB/T97.1	2
76	0204002	Self-locking nut M5 - GB/T889.1	2
77	0205005	Washer D.5 - GB/T96	2

# CONTROL UNIT

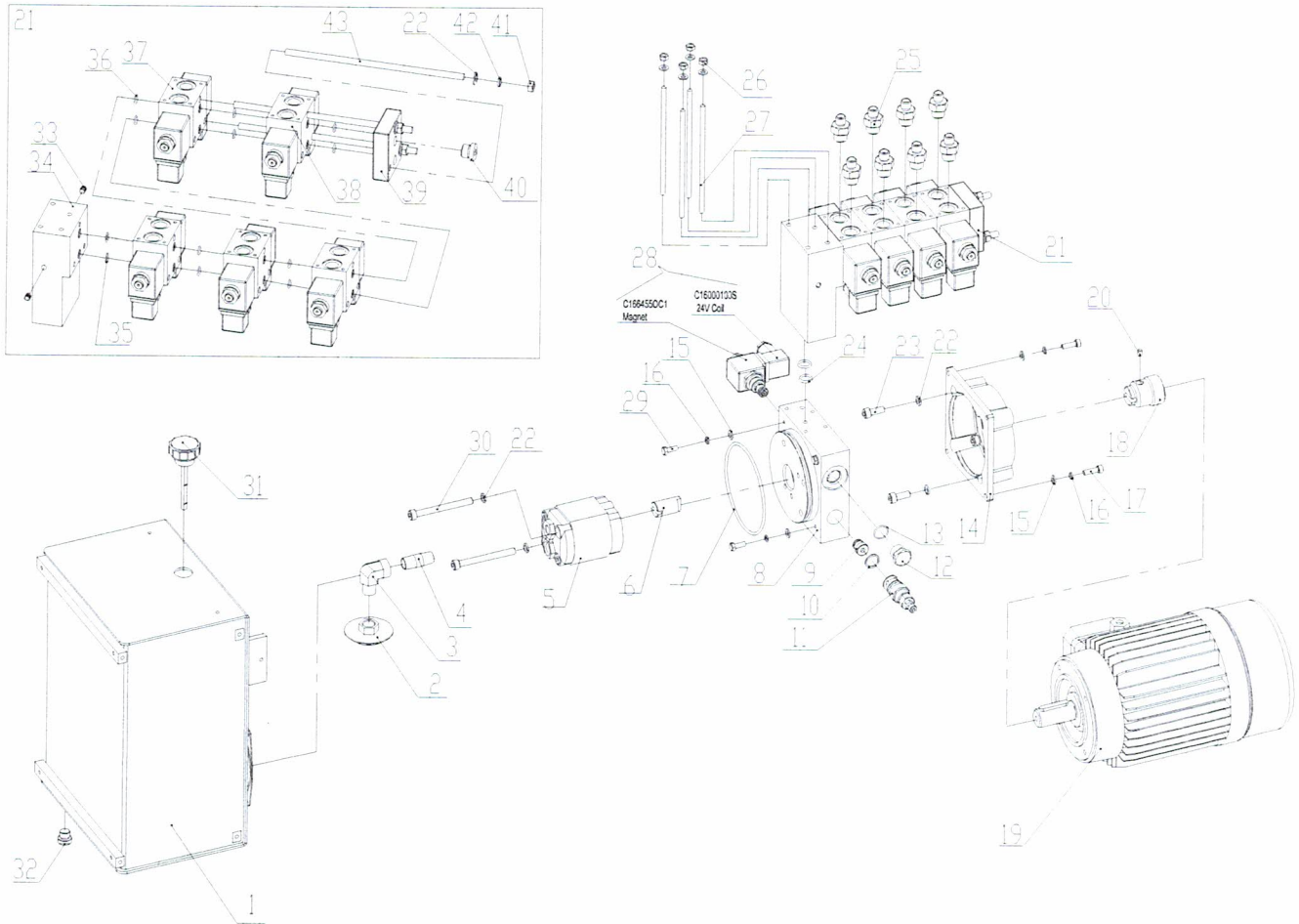


# CONTROL UNIT

ITEM	PART NO.	DESCRIPTION	QTY
1	C51BD12100	Support	1
2	0508277	Cable connector with 4 pins	1
3	0508350	Conduit connector M18	1
4	0511192	Cable conduit 15.8	1
5	0508282	Cable connector with 19 pins	1
6	0201136	Screw M3X10 - GB/T9074.4	8
7	0209042	Screw M6X8 - GB/T80	4
8	C51BD12001	Pivot pipe	1

ITEM	PART NO.	DESCRIPTION	QTY
9	0206015	Screw M4X16 - GB/T818	1
10	C51BD12200	Casing	1
11	0205002	Washer D.4 - GB/T97.1	6
12	0203002	Nut M4 - GB52	6
13	0502044	Emergency stop knob	1
14	0505045	Manipulator	3
15	C51BD12002	Casing cover	1
16	C51BD12003	Control decal	1
17	0205004	Washer D.5 - GB/T97.1	4
18	0206024	Screw M5X10 - GB/T818	4
19	0502068	Chuck opening/closing switch	1
20	0507013	Terminal board H3081-6	1
21	0507009	Terminal board H3801-12	1
22	0206018	Screw M4X30 - GB/T818	4

## HYDRAULIC POWER UNIT



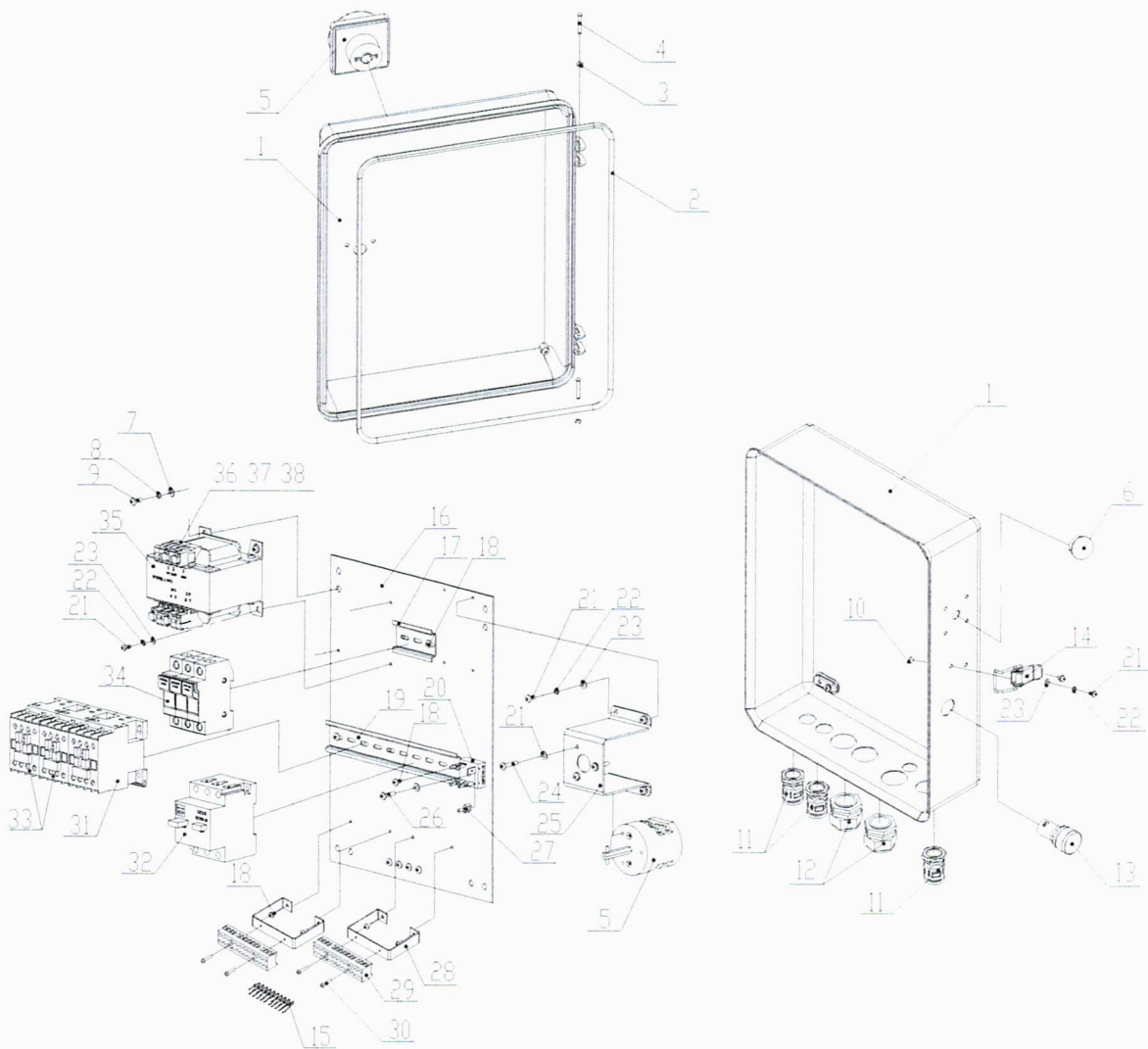
## HYDRAULIC POWER UNIT

ITEM	PART NO.	DESCRIPTION	QTY
1	C51AY11000	Oil tank	1
2	0305010	Oil filter 3/8	1
3	0303007	Union 3/8	1
4	BZ-G18X40	Oil draining pipe	1
5	0301009	Gear pump 3.7cc	1
6	BZ-BJ36	Pump joint	1
7	0309013	O-ring 115X3.55	1
8	BZ-ZB-V6	Manifold	1
9	0307067	Non return valve	1
10	0313057	Copper washer 16X20	1

ITEM	PART NO.	DESCRIPTION	QTY
11	0307010	Pressure overload valve	1
12	BZ-SD-01	Manifold plug	1
13	0309054	O-ring 17X2	1
14	BZ-DJ-1B	Motor flange	1
15	0205006	Washer D.6 - GB/T97.1	12
16	0208005	Locking washer D.6 - GB/T93	8
17	0202033	Screw M6X20 - GB/T70.1	4
18	BZ-ZT24	Motor joint	1
19	0509026	220/380V/50/60HZ/1.5KW 4P	1
20	0209042	Screw M6X8 - GB/T80	1
21	W5-4+1	Multiple base with solenoid valves	1
22	0208006	Locking washer D.8 - GB/T93	9
23	0202045	Screw M8X20 - GB/T70.1	4
24	0309019	O-ring 18X2.4	2
25	0303048	Hose union 1/4	8
26	0203004	Nut M6 - GB/T6170	4
27	0213032	Stud M6x160 - GB/T901	4
28	0307098	2/2 solenoid valve normally open V389674A20	1
29	0201013	Screw M6X16 - GB/T5783	4
30	0202051	Screw M8X80 - GB/T70.1	2
31	0305025	Oil level plug 3/4	1
32	0305016	Tank plug 1/4	1
33	0305001	Sealing plug QD07	2
34	BZ-W-YC1	Interface block	1
35	0309014	O-ring 13X1.9	2
36		O-ring 8.5X1.80	10
37	0307096	ED06Z modular directional valve DC24V	4
38	0307097	ED08Z modular directional valve DC24V	1
39	0307108	Closing plate R933003329	1
40	0305018	Oil plug 3/8	1
41	0203029	Nut M8 - GB/T6170	3
42	0208006	Locking washer D.8 - GB/T93	3
43	0213078	Stud M8X280 - GB/T901	3



# ELECTRIC UNIT

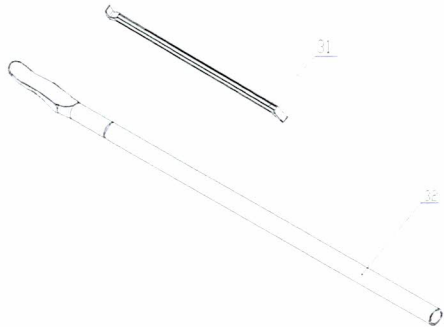
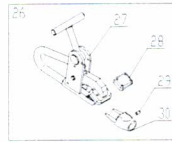
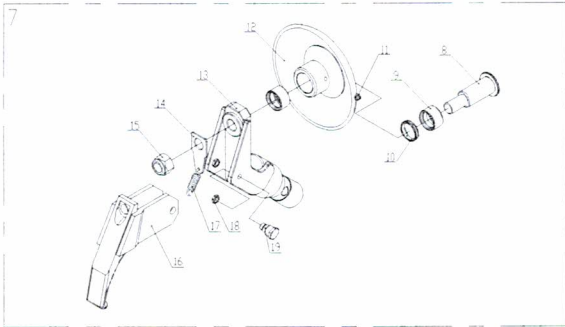
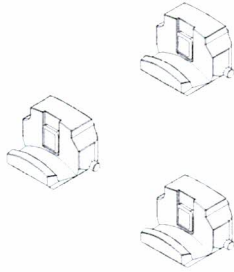
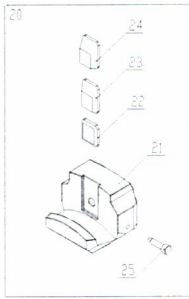
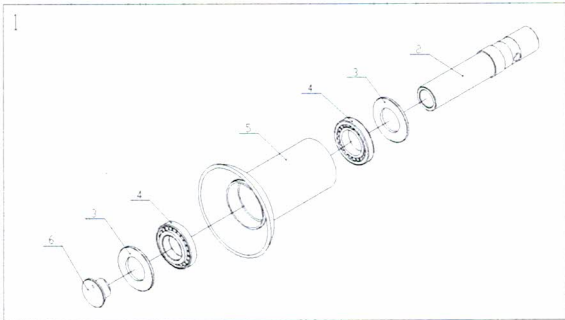


# ELECTRIC UNIT

ITEM	PART NO.	DESCRIPTION	QTY
1	C51BD11100	Complete casing	1
2	0511026	Gasket	1
3	0211001	Seeger D.3.5 – GB/T896	2
4	S551-6	Pin	2
5	0505025	Power switch 20A	1
6	0508019	Plug HP-22	1
7	0205006	Washer D.6 – GB/T97.1	4
8	0208005	Locking washer D.6 – GB/T93	4

ITEM	PART NO.	DESCRIPTION	QTY
9	0206031	Screw M6X10 – GB/T818	4
10	0203002	Nut M4 - GB52	2
11	0507118	Ferrule M20	3
12	0508012	Cable holder M27	2
13	0502023	Pilot lamp AC24V	1
14	0511169	Clamp	1
15	0507027	LED IN5408	10
16	C61AD11301	Component base plate	1
17	0508330	Guide 35X60	1
18	0206019	Screw M4X6 - GB/T818	12
19	0508330	Guide 35X200	1
20	0508006	Rectifier 3510	1
21	0206023	Screw M4X8 - GB/T818	10
22	0208002	Locking washer D.4 - GB/T93	9
23	0205002	Washer D.4 - GB/T97.1	10
24	0206016	Screw M4X20 - GB/T818	4
25	C61AD11302	Switch support	1
26	0206015	Screw M4X16 - GB/T818	1
27	0507020	Reed 6.3	4
28	CC-850223	Terminal support	2
29	0507009	Terminal board H3081-12	2
30	0206002	Screw M3X16 - GB/T818	4
31	0501002	Contacto 1210/AC24V	1
32	0501020	Breaker 6.3-10A	1
33	0501004	Contacto 1801/AC24V	2
34	0504001	Overload cutoff 16A	3
35	0503010	Transformer 115VA 220V/380V 25V-29V	1
36	0504005	Fuse 5A/5X20	1
37	0504003	Fuse 2A/5X20	1
38	0504016	Fuse 1A/5X20	1

# TOOLS AND ACCESSORIES



# TOOLS AND ACCESSORIES

ITEM	PART NO.	DESCRIPTION	QTY
1	C51B500000	Press roller unit	1
2	C51B500001	Roller shaft	1
3	C91A000002	Washer	2
4	0214038	Bearing 30212	2
5	C51B510000	Press roller	1
6	C91A000003	Thread piece M45X1.5	1
7	CC-620000	Double tool unit	1 (Optional)
8	CC-620001	Bead breaking disc pin	1
9	CC-620002	Bead breaking disc bush	2
10	CC-620003	Spacer	1
11	0215020	Greaser 10X1	1
12	CC-620100	Bead breaking disk	1

ITEM	PART NO.	DESCRIPTION	QTY
13	CC-620200	Tool support	1
14	CC-620004	Spring connection plate	1
15	0204011	Self-locking nut M27 - GB/T889.1	1
16	CC-620300A	Short tool	1
17	CC-620005	Spring	1
18	0204014	Nut M16X1.5 - GB/T6173	2
19	CC-620007	Pin	2
20	CC-F100100	Clamp protection kit	4 (Optional)
21	CC-F100101	Clamp protection	4
22	YC8-F100102	Plastic insert 1	4
23	YC8-F100103	Plastic insert 2	4
24	YC8-F100104	Plastic insert 3	4
25	YC8-F100105	Bolt	4
26	YC8-F200000	Pliers for alloy rim	1 (Optional)
27	DB-11-00	Pliers	1
28	YC8-F201001	Plastic block	1
29	0209037	Screw M6X10 - GB/T80	1
30	YC8-F202001	Alloy protection	1
31	0511040	Short tire lever 24"	1
32	DB-12T	Long bead lifting lever	1