

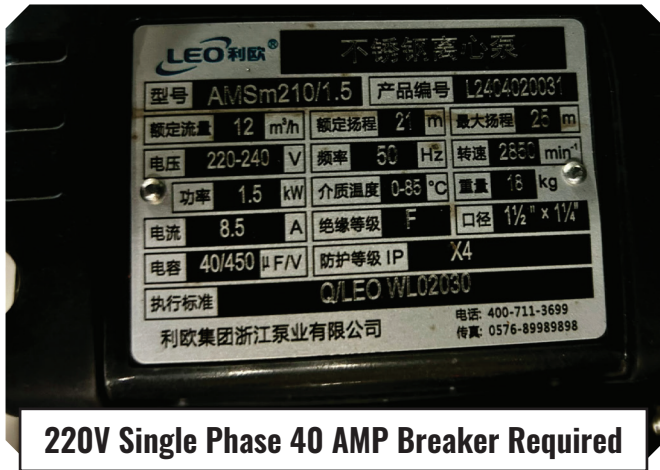
# Spray Wash Cabinet Quick Start Guide

Please read this Initial Start-Up Procedure Guide before installing and using your Atlas® Spray Wash Cabinet. It is extremely important that you understand this simple step by step installation/instruction manual. These simple steps will take a total of about two (2) hours to perform. Failure to follow the procedure outlined in this simple start-up guide may void your Manufacturer's Warranty.

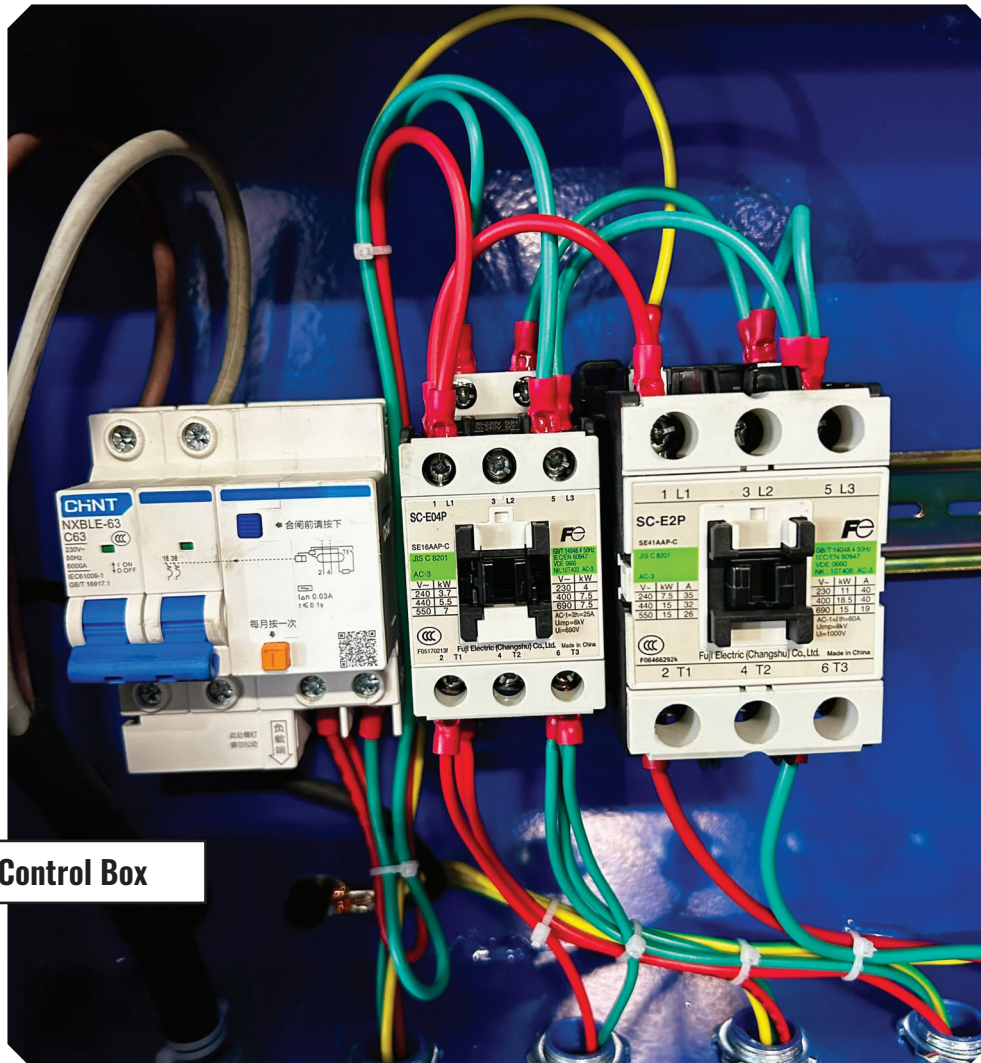


ATEHT-STW-500

1. Check all wire connections. Vibration during shipment may have loosened wires. Please have a qualified electrician on site to make electrical hook-up and inspect wiring connectivity. Move spray wash cabinet to area where it will be used.

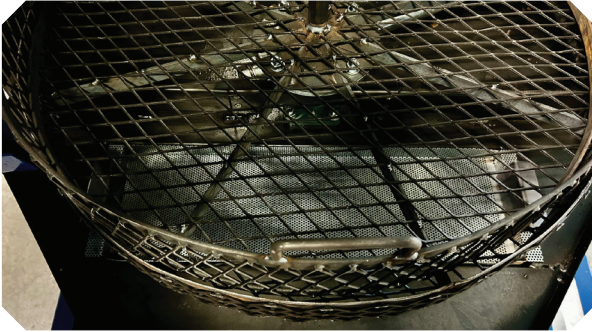


2. Make sure that the Spray Wash Cabinet power cord is unplugged from the outlet or, if you have wired it directly to an electrical panel, the breaker which controls the Spray Wash Cabinet is turned OFF. Also, make sure the Cycle Timer is OFF.



Note that wire color may vary from US standard. Verify the Hot and Ground leads.

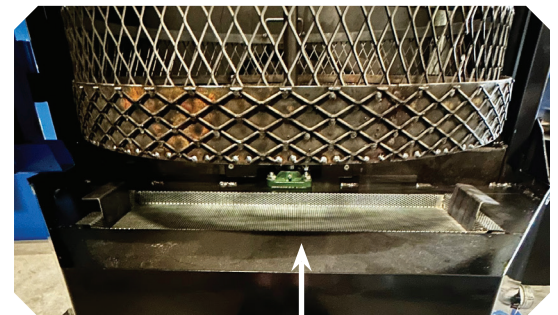
3. Add water to the tank until water level is clearly over the bottom of the filter basket. The water must be filled to this level before each wash cycle. The pump will pulsate if the water level is too low.



4. Turn on the Breaker (if hard wired) that controls the Machine or plug in the power cord.



5. Please use a thermometer (thermometer not included) to measure the temperature of the water. When the water reaches the temperature you have set the thermostat to (this may take up to an hour) **\*add the recommended style detergent** directly to the filter basket. Be sure to follow the detergent manufacturer's directions regarding the amount of detergent to add. Failure to follow the procedure outlined could result in foaming incident and would result of restarting the startup procedures.

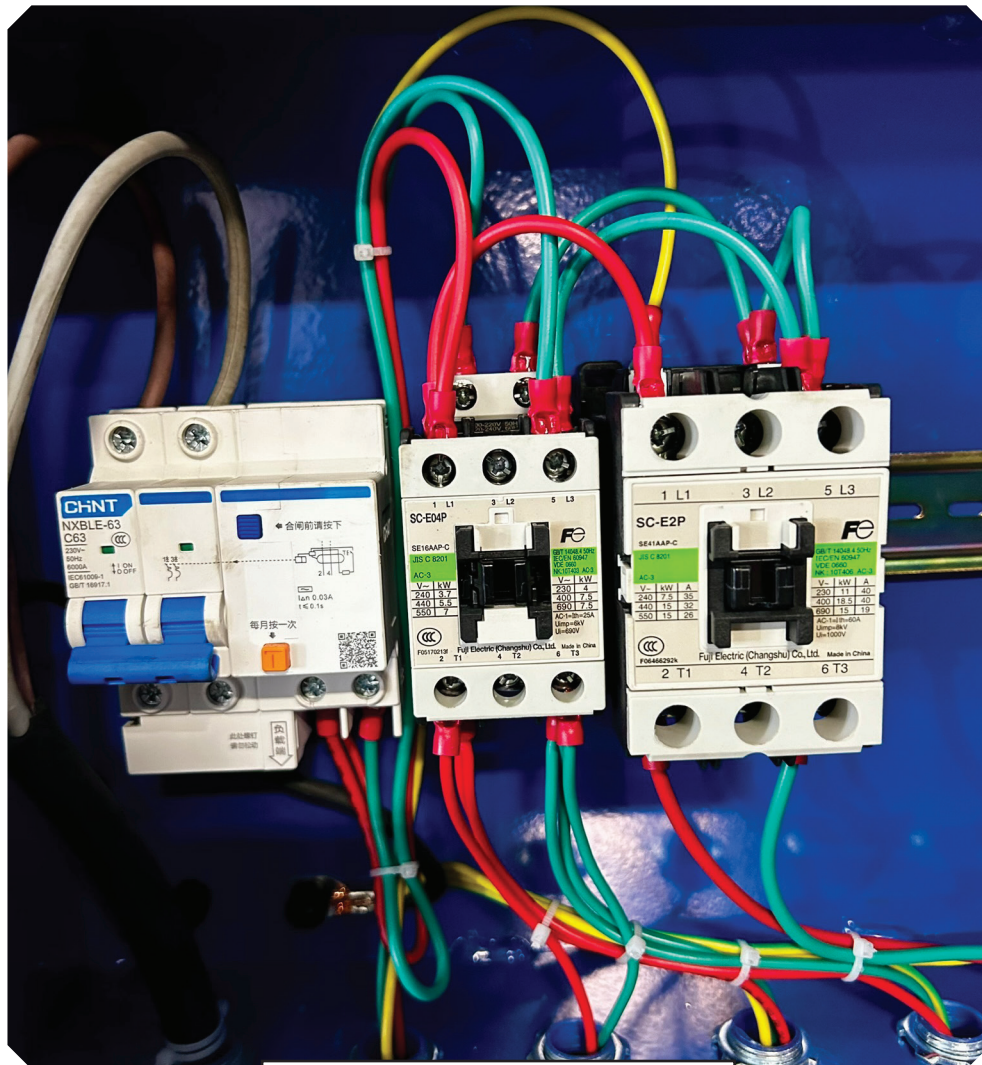


**Filter Basket**

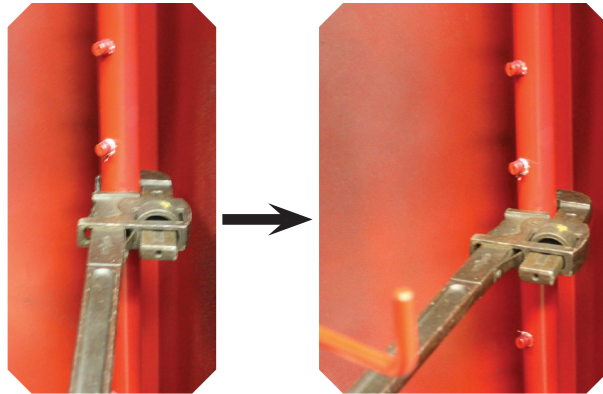
**\*Round Robin** is a water-based, alkaline degreaser for automatic spray-wash cabinets. It is formulated to clean ferrous and non-ferrous metal parts in industrial applications. The cleaner is particularly useful for automotive parts stores, vehicle dealers, automotive repair shops, passenger car rental agencies, motorcycle dealers, service stations and truck leasing companies. It works well in all high-pressure spray wash cabinets and rinses easily, leaving no noticeable residue on parts. Heat to 140°F to 170°F for aluminum and 140°F to 200°F for ferrous metals. Use in a concentration range of 2-6 percent by volume for aluminum and 2-10 percent for ferrous metals.

For more information visit: [https://zep.com/search?gf\\_10005=availability\\_yes&q=790835&type=product](https://zep.com/search?gf_10005=availability_yes&q=790835&type=product)

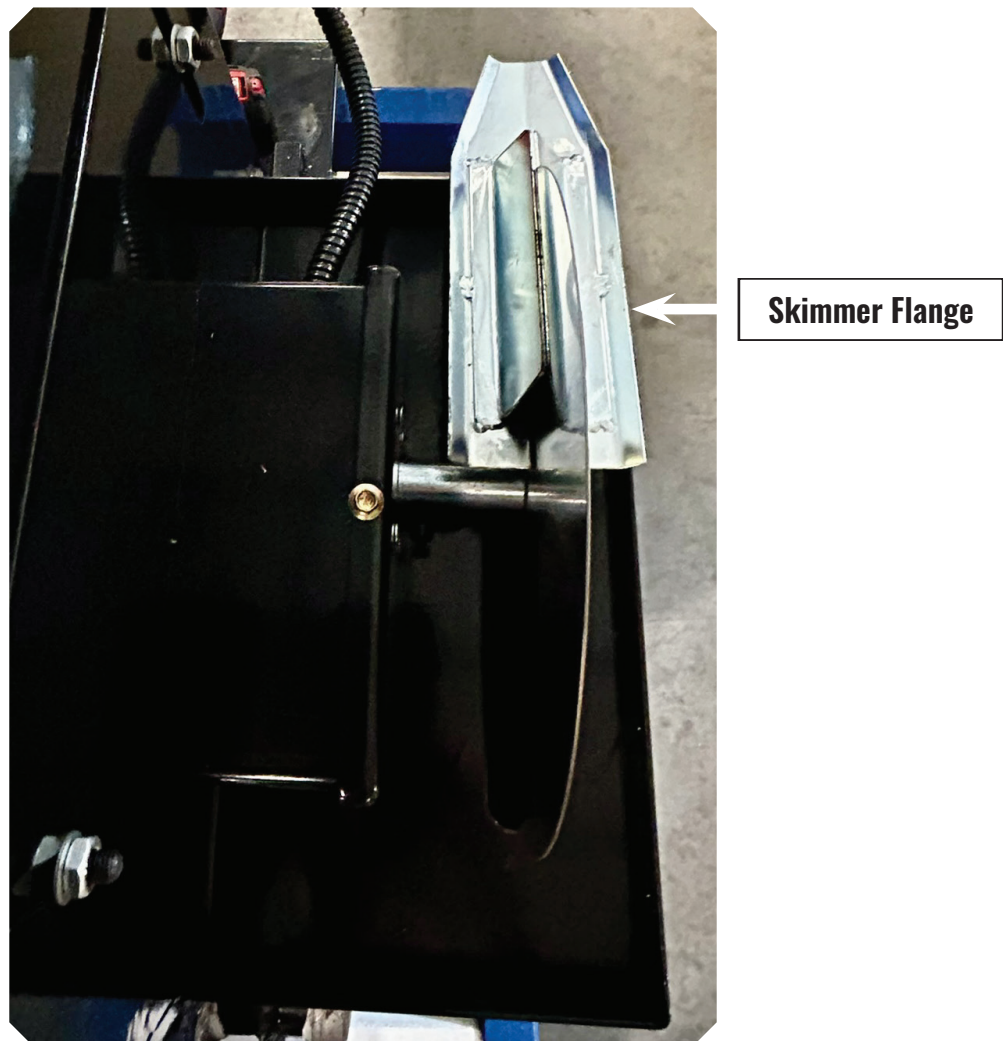
6. Close and latch the door. Turn the MOTOR Switches to ON and set the wash timer to run a 15 minute wash cycle.



7. Walk around the machine and check for leaks. When the wash cycle ends, if there were any leaks around the door, open the cabinet and adjust the spray nozzles to spray away from the door. Also, if you do not hear constant spraying during the wash cycle, you may need to add water. The water level may drop too far after the pump system is primed (filled with water) for the first use.



8. Adjust the oil skimmer flanges to make light contact with the skimmer wheel. Aggressive contact against the skimmer wheel may strain the skimmer motor.



9. Run the Cabinet for at least four (4) complete 15 minute wash cycles over the next two days. The goal of this is to thoroughly coat the inside of the Cabinet with the Rust Inhibitors contained in the recommended style of Detergent. This will help keep the inside of the Cabinet free of rust between washes. You may clean parts after completing the initial 15 minute wash cycle.
  
10. Do not allow sludge to accumulate and exceed a 1" depth. Clean this sludge from the tank within the first week (See Instruction Manual). If you are cleaning the same parts each time, you will get a good idea of how often you need to remove the sludge from your machine. You will also be able to determine the type of cleaning solution and length of run time needed. More complete instructions are located in your Installation and Operation Manual.